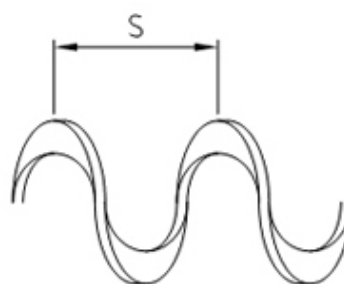
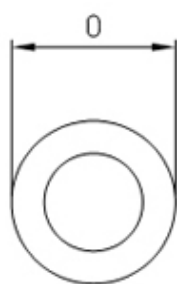
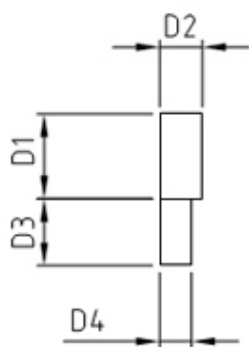


## Enkele en dubbele spiralen



### HOOFDSPIRAAL

D1 materiaalhoogte  
D2 materiaaldikte

O = DIAMETER

S = SPOED

### HULPSPIRAAL

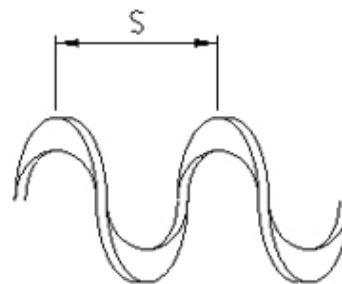
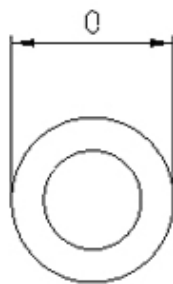
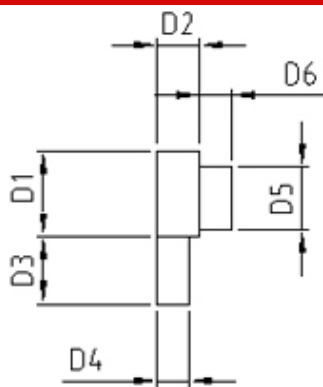
D3 materiaalhoogte  
D4 materiaaldikte



O	D1	D2	D3	D4	S1
80	20	15			80
	25	20			100
	30	25			120
90	20	15			90
	25	20			110
	30	25			130
100	20	15			80
	25	20			100
	30	25			120
120	20	15			80
	30	20			110
	40	25			130
140	20	15			100
	30	20			130
	40	25			150
160	30	15			120
	40	20			160
	50	25	20	15	190
175	30	15			150
	40	20			180
	50	25	20	15	210
190	30	20	20	15	120
	40	25	25	15	150
	50	30	30	15	190
210	40	20	20	15	130
	50	25	25	20	170
	60	30	30	20	210
215	40	20	20	15	130
	50	25	25	20	180
	60	30	30	20	220

230	40 50 60	20 25 30	20 25 30	15 20	150 200 230
240	50 60 70	20 25 30	20 25 30	15 20	140 190 240
280	50 60 70	20 25 30	30 40 50	20 25	220 280 320
290	50 60 70	20 25 30	30 40 50	20 25	210 250 290
315	60 70 80	20 25 30	30 40 50	20 25	250 270 320
320	60 70 80	20 25 30	30 40 50	20 25	250 300 340
350	60 70 80	20 25 30	40 50 60	20 25	290 310 350
365	60 70 80	20 25 30	40 50 60	20 25	240 360 405
380	60 70 80	20 25 30	40 50 60	20 25	330 380 405
400	80	20 25 30	40 50 60	20 25	300 350 400
405	80	20 25 30	40 50 60	20 25	310 360 430
420	80	20 25 30	40 50 60	20 25	310 380 410
450	80	20 25 30	40 50 60	20 25	400 450
460	80	20 25 30	50 60 70	20 25	360 440
480	80	20 25 30	50 60 70	20 25	350 460 510
500	80	20 25 30	50 60 70	20 25	380 510
530	80	20 25 30	50 60 70	20 25	400 530
600	80	20 25 30	60 70 80	20 25	530 610

### De extra verzwaarde spiraal (1)



**HOOFDSPIRAAL**

- D1 materiaalhoogte
- D2 materiaaldikte

**O = DIAMETER**

**S = SPOED**

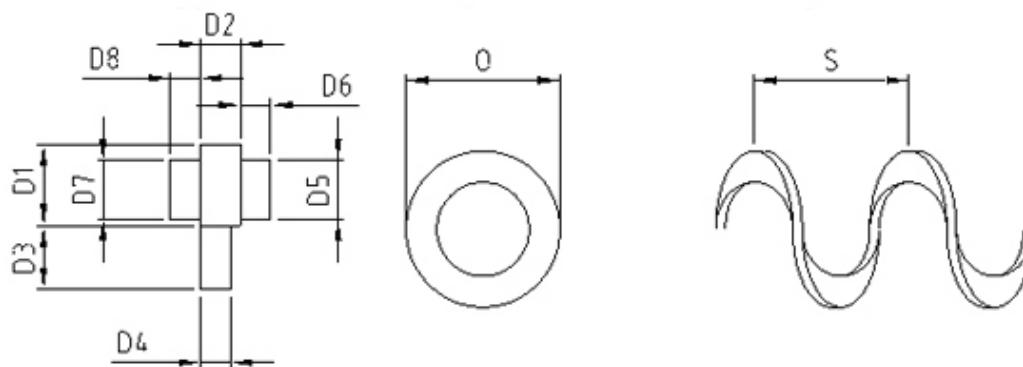
**HULPSPIRAAL**

- D3 materiaalhoogte
- D4 materiaaldikte
- D5 materiaalhoogte
- D6 materiaaldikte



O	D1	D2	D3	D4	D5	D6	S
280	60	25	40	20	40	20	320
315	70	30	50	20	50	20	320
350	80	30	60	25	60	20	350
365	80	30	60	25	60	20	365
400	80	30	60	25	60	20	400
405	80	30	60	25	60	20	430
460	80	30	60	25	60	20	440
500	80	30	60	25	60	20	510
600	80	30	70	25	60	20	610

**De extra verzwaarde spiraal (2)**



**HOOFDSPIRAAL**

D1 materiaalhoogte  
D2 materiaaldikte

**HULPSPIRAAL**

D3 materiaalhoogte  
D4 materiaaldikte

D5/D7 materiaalhoogte  
D6/D8 materiaaldikte

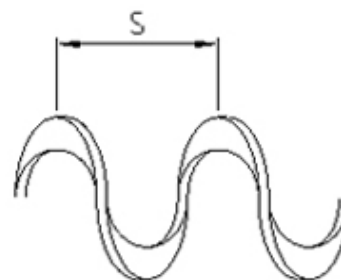
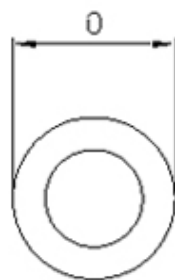
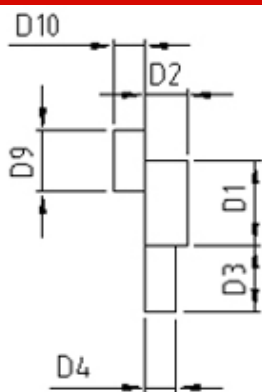
**O = DIAMETER**

**S = SPOED**



O	D1	D2	D3	D4	D5	D6	D7	D8	S
280	60	25	40	20	40	20	40	20	320
315	70	30	50	20	50	20	50	20	320
350	80	30	60	25	60	20	60	20	350
365	80	30	60	25	60	20	60	20	365
400	80	30	60	25	60	20	60	20	400
405	80	30	60	25	60	20	60	20	430
460	80	30	60	25	60	20	60	20	440
500	80	30	60	25	60	20	60	20	510
600	80	30	70	25	60	20	60	20	610

**De extra verzwaarde spiraal (3)**



**HOOFDSPIRAAL**

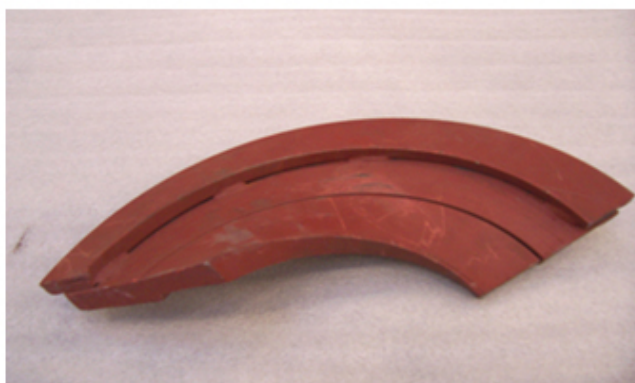
**O = DIAMETER**

**S = SPOED**

D1 materiaalhoogte  
D2 materiaaldikte

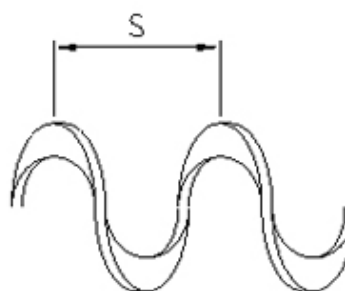
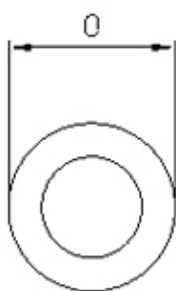
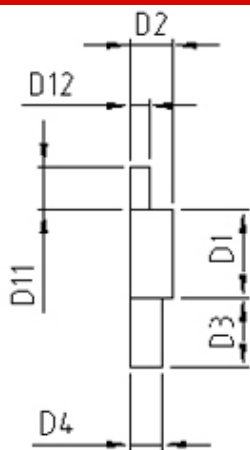
**HULPSPIRAAL**

D3/D7 materiaalhoogte  
D4/D8 materiaaldikte



O	D1	D2	D3	D4	D9	D10	S
300/280	60	25	40	20	30	15	320
335/315	70	25	50	20	30	15	320
370/350	70	25	50	20	30	15	350
385/365	70	25	50	20	30	15	365
420/400	80	25	50	20	30	15	400
445/405	80	25	60	20	50	15	430
500/460	80	25	60	20	50	15	440
540/500	80	25	60	20	50	15	510
640/600	80	30	70	25	50	15	610

**De extra verzwaarde spiraal (4)**



**HOOFDSPIRAAL**

**O = DIAMETER**

**S = SPOED**

D1 materiaalhoogte  
D2 materiaaldikte

**HULPSPIRAAL**

D3/D11 materiaalhoogte  
D4/D12 materiaaldikte



O	D1	D2	D3	D4	D11	D12	S
300/280	60	25	40	20	10	10	320
335/315	70	25	50	20	10	10	320
370/350	70	25	50	20	10	10	350
385/365	70	25	50	20	10	10	365
420/400	80	25	50	20	10	10	400
445/405	80	25	60	20	20	10	430
500/460	80	25	60	20	20	10	440
540/500	80	25	60	20	20	10	510
640/600	80	30	70	25	20	10	610

[Sluit dit venster »](#)